

AD-VWPH

HEAVY DUTY POP-OUT VIDEO WALL BRACKET

Create a video wall with commercial displays up to 70kg or 154lb each, in any array configuration. AD-VWPH delivers heavy duty capacity with longer arm reach and a convenient kickstand to hold a display out during maintenance.

Create video walls for any display configuration

Push to open & close

Adjustable force

Pop-out force can be set to one of six levels to suit different display weights

Tamper-proof

The pop-out function is tamper-proof for peace of mind in public spaces.

Long pop-out

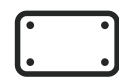
Pops-out to 315mm (12.40") from the wall for easy display rear access.

Available in black



Theft resistant

Display can be secured with a screw of padlock (padlock not included).



to 400x400 70kg (154lb)
UNIVERSAL
600x400
400x600



Fine tune adjustments

In three dimensions after screen installed; up/down, in/out, left/right.

Kickstand

Kickstands to hold display out for easier rear access.

10 Year Warranty

Create video walls for any display configuration



Minimum distance to wall
110mm (4.33")



Maximum distance to wall
315mm (12.40")

Conceal media devices

We recommend media, connectivity, and other electronic devices be mounted within the mount footprint.

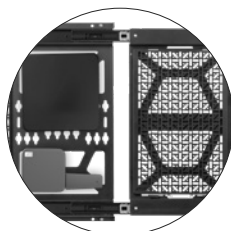
Media devices to a depth of 90mm (3.54").

With displays 55"+ consider our sliding device panel accessory, see below.

Ordering code

AD-VWPH

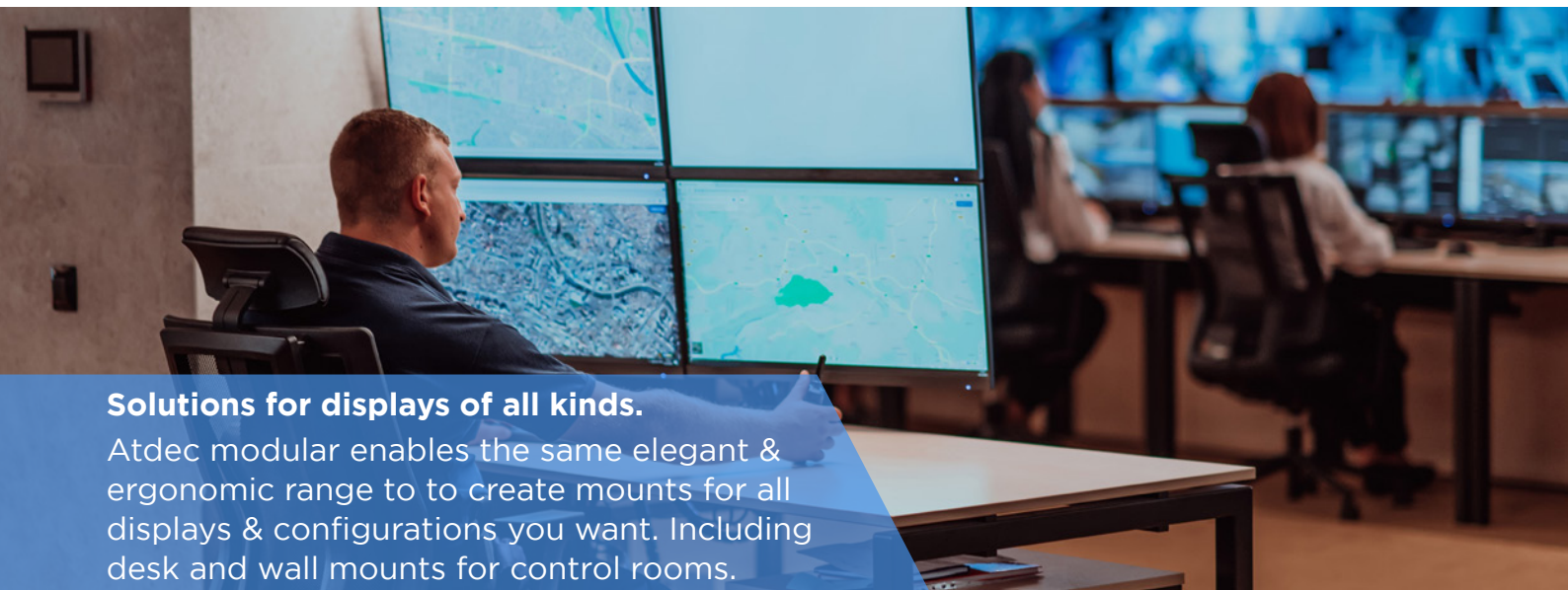
[SEE AD-VWPH ONLINE](#)



Accessory: sliding media panel

Conceal and protect devices with AD-AC-PS - WITH displays 55"+

[SEE AD-AC-PS ONLINE](#)



Solutions for displays of all kinds.

Atdec modular enables the same elegant & ergonomic range to create mounts for all displays & configurations you want. Including desk and wall mounts for control rooms.



Atdec Uncover™ is where our infinite mounting possibilities become your specific mounting solutions.



Call us to discuss your next project